

## Overview

### Mapping our future

Energy Usage

Climate Change

Environment Protection

### Working together

“Sustainable Tipp” Initiative



## Drivers

EU 20-20-20 Energy & Climate Targets

Investment in infrastructure projects

Tipperary Energy Agency Partner

SEAI Grant Aid Better Energy Communities

Preservation of the environment



## Background

Tipperary Co Co & Tipperary Energy Agency

Delivered four Strategic Energy Management Plans  
2007 2011 2014 and 2020 -2030

Covenant of Mayors Signatory 2017

Sustainable Energy Action Plan

Renewable Energy Strategy

Climate Adaptation Strategy



## Tipperary Energy Agency Board

Preparation of plans

Sustainable Energy Community Initiatives

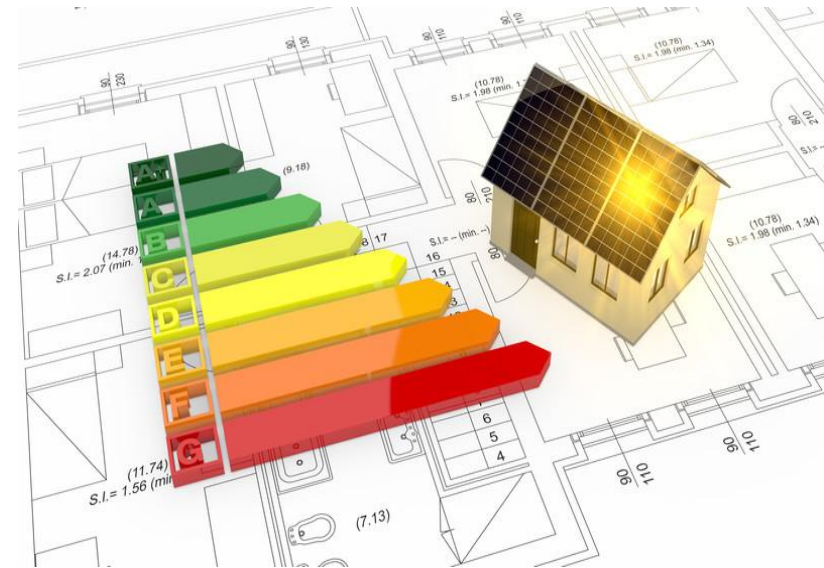
Funding Applications to SEAI & EU

Tipperary Co Co instrumental in establishing TEA

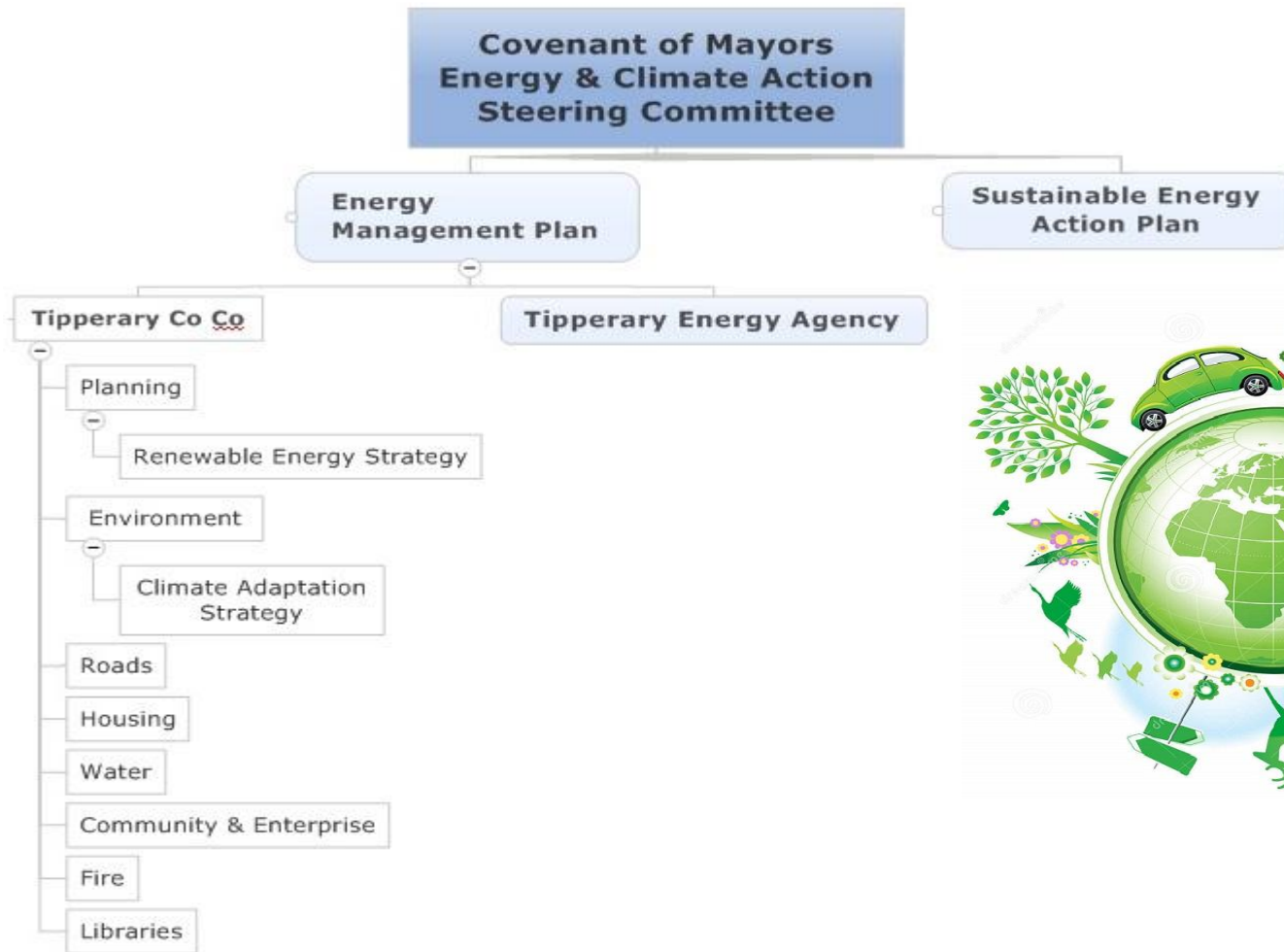
Tipperary Co Co is represented on the Board

Monitoring & reporting co-ordination

Preparing Energy Audits & Feasibility Reports



## Governance



## Tipperary Co Co Role

### Housing

2017 Building Regulations  
NZEB for Public Sector Buildings

### Roads

Public Lighting  
Fleet Management/Transport

### Property Management

Buildings Upgrades

### Planning

County Development Plan

### Environment

Co-ordination



## Sustainable Energy Action Plan (SEAP)

*Sustainable Tipp – accelerating Tipperary’s transition to a sustainable, low carbon economy”*

### County Focus

- For homes
- For Farms
- For Schools
- For businesses
- For communities

Community Energy Projects

Communications strategy

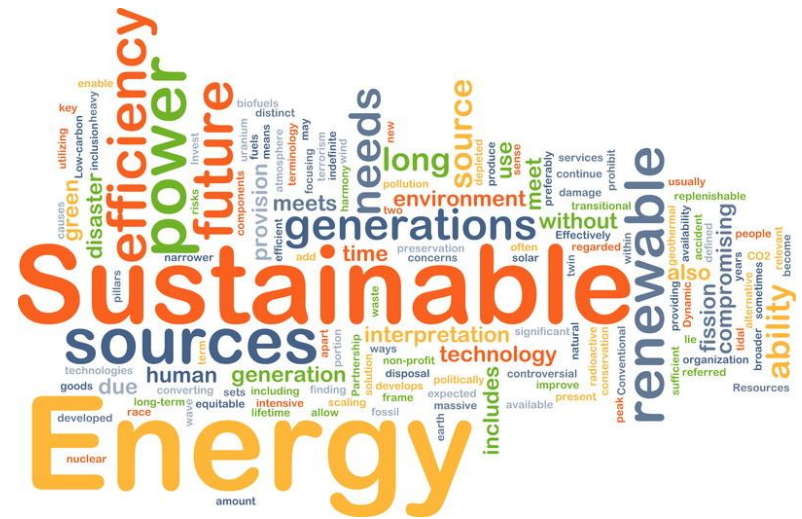


# SUSTAINABLE **T**ipperary

YOUR ENERGY, YOUR FUTURE

## SEAP Stakeholders

South Tipperary Development Company  
Local Enterprise Office, Tipperary  
Limerick Institute of Technology  
Public Participation Network  
Tipperary County Council  
Tipperary Energy Agency  
Teagasc  
North Tipperary Leader














## SEAP Actions

- Sectors
  - Planning
  - Agriculture
  - Residential
  - Commercial
  - Renewable Energy
  - Education
  - Transport
  - Local Authority

TIPPERARY IS PLANNING

**32** ACTIONS TO REDUCE CO<sub>2</sub> LEVELS INCLUDING:

 <b>Better Energy Communities</b> funding to generate investment	 <b>SuperHomes:</b> Retrofit homes to an <b>A BER standard</b>	 More <b>social housing</b> and <b>public health retrofits</b> of homes
 <b>Active Energy Days</b> in Tipperary	 <b>SME Energy Efficiency Awareness</b>	 More <b>Renewable Energy</b> projects
 <b>Funding Information</b>	 <b>ENERGY IN AGRICULTURE</b> <b>Energy in</b>	 <b>Supporting</b>

## SEAP Projects

- Super Homes
  - 81 houses retrofitted value of €8.1M
- Citizen leading Climate Change and Energy transition Conference
- Energy in Agriculture Event
- Better Energy Community Grants  
70 communities - €10m investment
- County Heat Survey Map
- NZEB Awareness
- Templederry Community Wind Farm
- LIT –Energy Courses



## Interreg Projects

### **Community Virtual Power Plant**

Demonstrate how CVPP works

Generate local power from renewable sources for own needs

Roscrea Leisure Centre

Thurles Leisure Centre

Thurles MD Offices

Requires a minimum of 250kW of PV

Sell excess to a Community owned licensed supply company CRES

60% Grant aid /4 year payback

### **Smart Sustainable Public Spaces**

Thurles MD

Smart Lighting install sensors

**Interreg**   
EUROPEAN UNION  
**North-West Europe**

**cVPP**

European Regional Development Fund

## Strategic Energy Management Programme

Applies to all TCC facilities

Strategies for

Housing

Public Lighting

Fleet/Roads

Buildings

Planning

Public Relations

Prepare Annual Energy Action Plans

Increase energy awareness across the community

Progress Renewable Energy Sources

Monitor & report on energy targets



## Energy Consumption & Spend

### Significant Energy Users

Public Lighting - 39%  
Transport – 21%  
Leisure Centres – 20%  
Public Buildings – 20%

### Energy Costs

Electricity 61%  
Transport 27%  
Thermal 12%



## Energy Efficiency

### Measures

37% Energy intensity reduction from 2005 baseline

12,100 MWh recurring annual savings

TCC spends €1.1M on local fuel

12% energy consumption is supplied from renewable Sources

### Projects

10 Installations of solar PV arrays on buildings

6 Heating upgrades at leisure centres & fire stations

Upgrade of Lighting systems in libraries

1600 LED Street lights installed



## Renewable Energy

### Strategy

Planning and regulatory framework

Incorporated into County Development Plans & LECP

Support renewable energy initiatives

### Energy Consumption Sources

Electricity 42%

Transport Fuels – 28%

Fossil Fuels – 18%

Bio Mass – 12%



### Fossil fuels to biomass (2009-2017)

425,00 litres of oil were displaced

6 sites using local fuel

## Climate Adaptation Strategy

Environment & Climate Action Section  
Co-ordinator

Collated information of all sections

Incorporating Climate Adaptation  
function into the Energy Management  
role

Draft Strategy prepared for SPC in March





## Outcomes

Green Public Sector organisation of the year in 2018

37% Energy performance in the 2018 SEAI Efficiency Performance report.

Reduced Co2 emissions by 2,000 tonnes

100 Heat pumps installed

Generated 7,000 Kwh of energy savings.

Secured SEAI, Leader and EU funding

Achieved EU 20-20-20 targets

