

Overview

Mapping our future

Energy Usage

Climate Change

Environment Protection

Working together

“Sustainable Tipp”



Drivers

EU 20-20-20 Energy & Climate Targets

Investment in infrastructure projects

Tipperary Energy Agency Vision

SEAI Grant Aid Better Energy Communities 30%

Preservation of the environment



Tipperary Co Co & Tipperary Energy Agency

Partnership Started in 2007

4 Strategic Energy Management Plans

2007-2010 2011 -2014 2014-2020 2020 -2030

Covenant of Mayors Signatory 2017

Sustainable Energy Action Plan

Renewable Energy Strategy

Climate Adaptation Strategy



Tipperary Energy Agency Partnership

Preparation of the SEAP and EAP

Sustainable Energy Communities

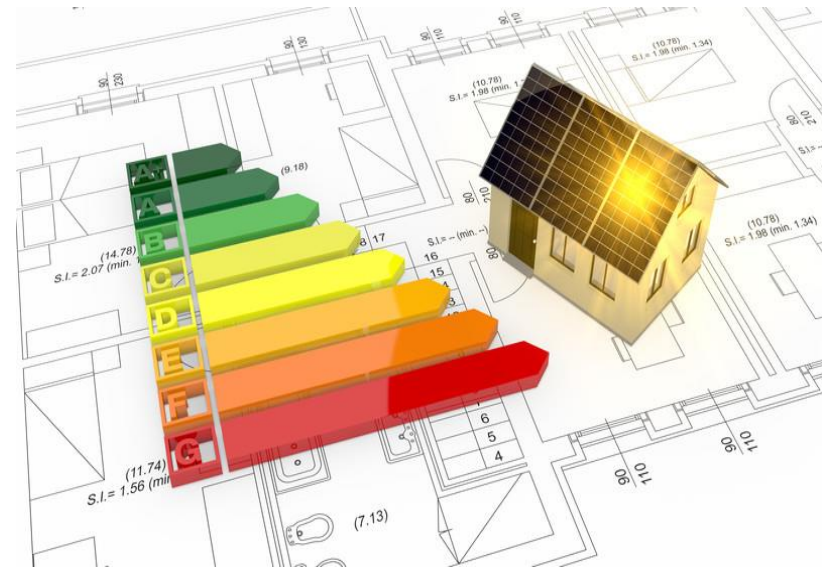
Funding Applications to SEAI & EU

Tipperary Co Co established TEA

Represented on the Board

Monitoring & reporting co-ordination

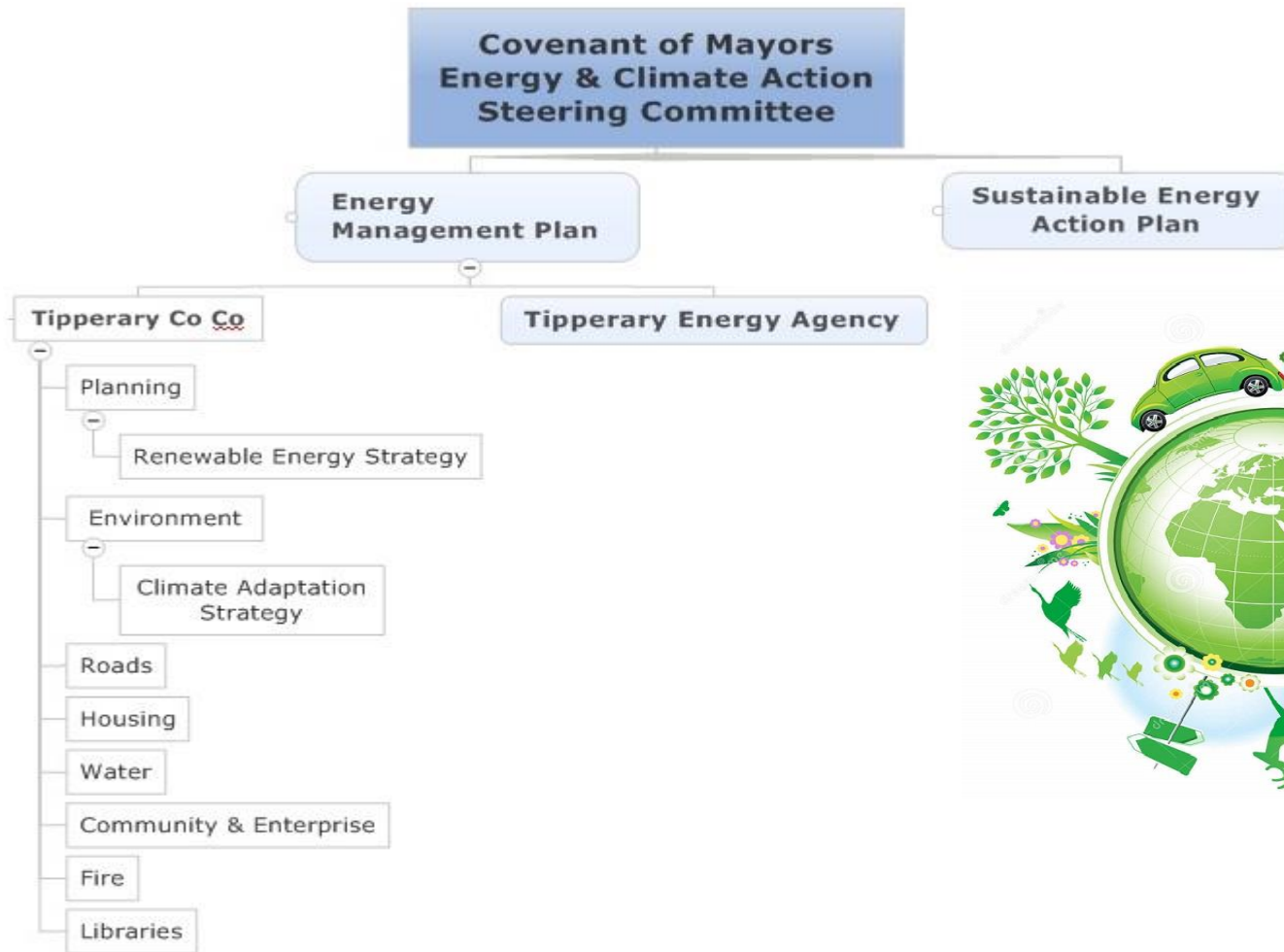
Preparing Energy Audits & Feasibility Reports



SUSTAINABLE *Tipp*

YOUR ENERGY, YOUR FUTURE

Governance



Tipperary Co Co Role

Housing

2017 Building Regulations
NZEB for Public Sector Buildings

Roads

Public Lighting
Fleet Management/Transport

Property Management

Buildings Upgrades

Planning

County Development Plan

Environment

Co-ordination



Sustainable Energy Action Plan

“Sustainable Tipp – accelerating Tipperary’s transition to a sustainable, low carbon economy”

County Focus

- For homes
- For Farms
- For Schools
- For businesses
- For communities

Community Energy Projects
Communications strategy



SEAP Stakeholders

Agencies

South Tipperary Development Company

Local Enterprise Office, Tipperary

Limerick Institute of Technology

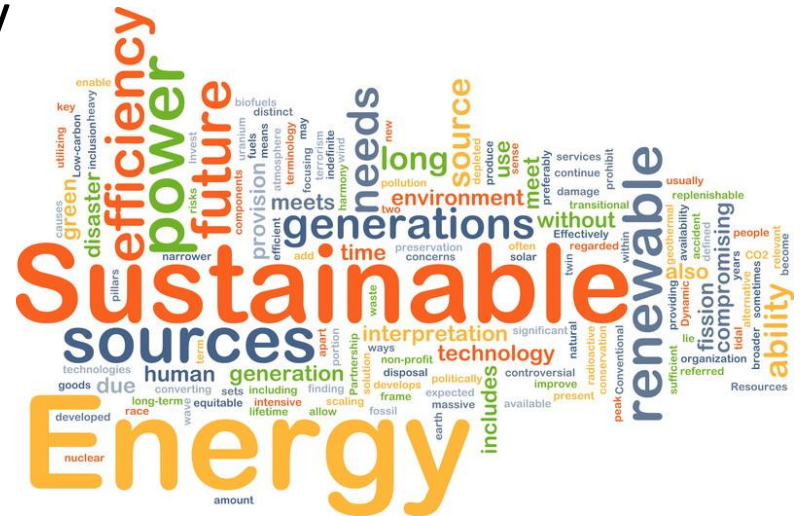
Public Participation Network

Tipperary County Council

Tipperary Energy Agency

Teagasc

North Tipperary Leader












SEAP Actions

- Sectors
 - Planning
 - Agriculture
 - Residential
 - Commercial
 - Renewable Energy
 - Education
 - Transport
 - Local Authority

TIPPERARY IS PLANNING

32 ACTIONS TO REDUCE CO₂ LEVELS INCLUDING:

 Better Energy Communities funding to generate investment	 SuperHomes: Retrofit homes to an A BER standard	 More social housing and public health retrofits of homes
 Active Energy Days in Tipperary	 SME Energy Efficiency Awareness	 More Renewable Energy projects
 Funding Information	 ENERGY IN AGRICULTURE	 Supporting

SEAP Projects

- Super Homes
 - 81 houses retrofitted value of €8.1M
- Citizen leading Climate Change and Energy transition Conference
- Energy in Agriculture Event
- Better Energy Community Grants
 - 70 communities - €10m investment
- County Heat Survey Map
- NZEB Awareness
- Templederry Community Wind Farm
- LIT –Energy Courses



Interreg Projects

Community Virtual Power Plant

Demonstrate how CVPP works

Generate local power from renewable sources for own needs

Roscrea Leisure Centre

Thurles Leisure Centre

Thurles MD Offices

Requires a minimum of 250kW of PV

Sell excess to a Community owned licensed supply company CRES

60% Grant aid /4 year payback

Smart Sustainable Public Spaces

Thurles MD

Smart Lighting install sensors



Strategic Energy Management Programme

Applies to all TCC facilities

Strategies for

Housing

Public Lighting

Fleet/Roads

Buildings

Planning

Public Relations

Prepare Annual Energy Action

Increase energy awareness across the community

Progress Renewable Energy Supply

Monitoring & reporting of energy targets



Energy Consumption & Spend

Significant Energy Users

Public Lighting - 39%
Transport – 21%
Leisure Centres – 20%
Public Buildings – 20%

Energy Costs

Electricity 61%
Transport 27%
Thermal 12%



Energy Efficiency

Measures

46% Energy intensity reduction from 2005 baseline

12,100 MWh recurring annual savings

12% energy consumption is supplied by renewable

TCC spends €1.1M on local fuel

Projects

10 Installations of solar PV arrays on buildings

6 Heating upgrades at leisure centres & fire stations

Lighting systems in libraries

1600 LED Street lights installed



Renewable Energy

Strategy

Planning and regulatory framework

Incorporated into County Development Plans & LECP

Support renewable energy initiatives

Energy Consumption Sources

Electricity 42%

Transport Fuels – 28%

Fossil Fuels – 18%

Bio Mass – 12%



Fossil fuels to biomass (2009-2017)

425,00 litres of oil were displaced

6 sites using local fuel

Climate Adaptation Strategy

Environment & Climate Action Section
Co-ordinator

Collated information of all sections

Incorporating Climate Adaptation
function into the Energy Management
Committee

Draft Strategy prepared for SPC in March



Outcomes

Green Public Sector organisation 2018

46% Energy performance in the 2018 SEAI Efficiency Performance report.

Reduced Co2 emissions by 2,000 tonnes

100 Heat pumps installed

Generated 7,000 Kwh of energy savings.

Secured SEAI, Leader and EU funding

Achieved EU 20-20-20 targets

